

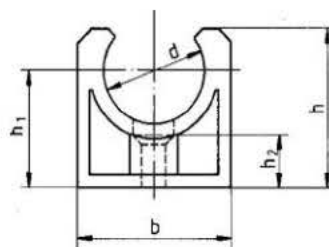
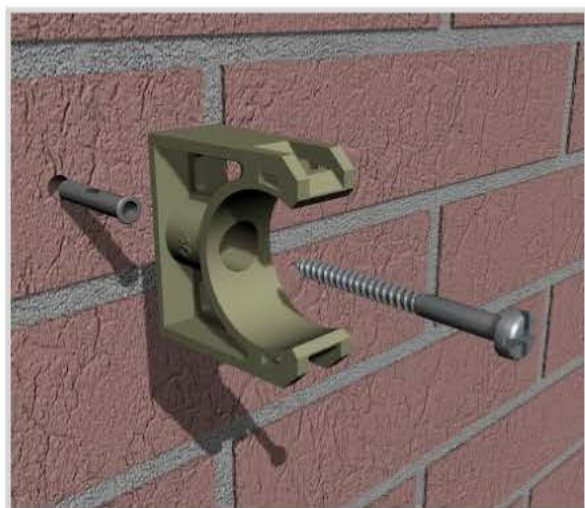
Art. 870 Collare fermatubo in polipropilene
Polypropilene pipe clips



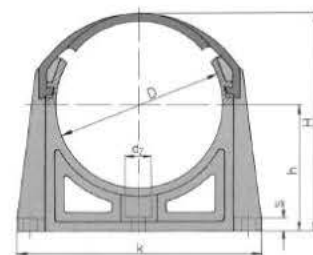
Catteristiche tecniche e vantaggi

- Base realizzata in polipropilene
- Fermaglio realizzato in PVC
- Colore: base grigio RAL 7032, fermaglio grigio RAL 7011
- Conforme alla norma DIN 16926
- Temperatura d'impiego: +10°C / +80°C

Codice	Misure Ø [mm]	h2 [mm]	b [mm]	h [mm]	h1 [mm]
870016	16 - 3/8	11	32	32	24
870020	20 - 1/2	11	32	34	25
870025	25 - 3/4	12	41	35	26
870032	32 - 1"	11	49	44	30
870040	40 - 1 1/4	-	58	68	43
870050	50 - 1 1/2	-	69	77	47
870063	63 - 2"	-	84	94	57
870075	75 - 2 1/2	-	126	107	64
870090	90 - 3"	-	143	124	73
870110	110 - 4"	-	163	146	85
870125	125	-	183	187	117
870140	140	-	199	209	132
870160	160	-	220	238	150



Fino al 32 mm



Dal 40 mm

