

Art. 901R Flat and C washer - AISI 316

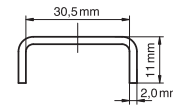
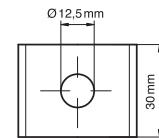
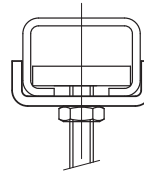
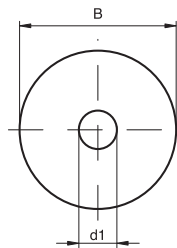
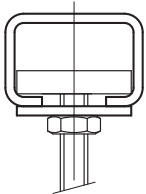


Technical specifications and advantages

- Made of AISI 316 stainless steel

Code	B [mm]	d1 Ø [mm]	s [mm]
901R06	25	6,5	2,5
901R08	25	8,5	2,5
901R10	25	10,5	2,5
901R12	30	13,0	3,0
901R16	30	16,5	3,0
C Washer			
901R125	for H1, 15, 2	12,5	3,0

Flat



901R125

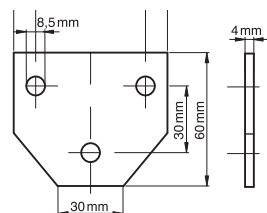
Art. 658R CorRail angle brackets - AISI 316



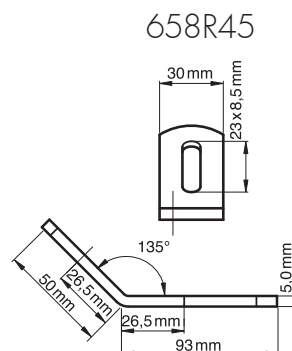
Technical specifications and advantages

- In AISI 316 stainless steel

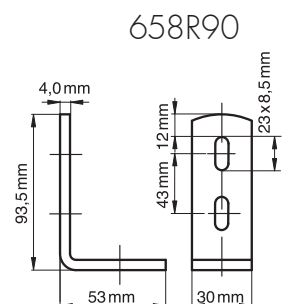
Codice	Profili
658R90	CorRail 90°
658R45	CorRail 135°
658R101	CorRail T connection



658R101



658R45



658R90