

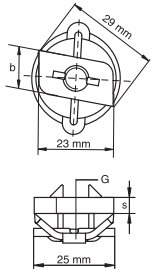
Art. 651 CorRail slide nut - AISI 316



Technical specifications and advantages

- Made of AISI 316 stainless steel
- With pre-assembled plastic spring for quick and easy assembly
- Spring in polyoxymethylene (POM), light blue colour

Code	G	Suitable Fixing rails	b x s [mm]	Fa,z [N]
6517306	M6	CorRail	13,5 x 4,0	2000
6517308	M8	CorRail	13,5 x 5,0	5000
6517310	M10	CorRail	14,0 x 5,0	4750



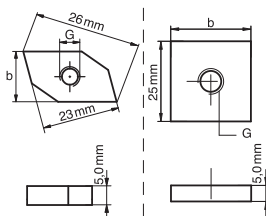
Art. 9012R CorRail diamond/square nut - AISI 316



Technical specifications and advantages

- Due to its particular shape, the nut fits perfectly into the fixing rail

Code	G	Fixing rails	b [mm]
9012R08	M8	CorRail	13,5
9012R10	M10	CorRail	14,0
9012R12	M12	CorRail	25,0



9012Rxx

9012R12