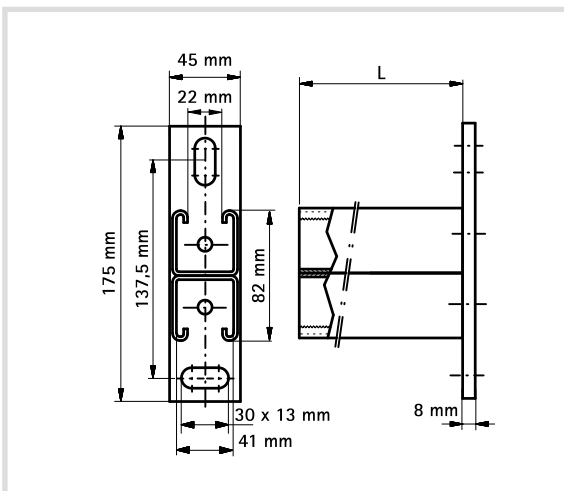


Art. 8692 CorSTRUT double cantilever arm



*Technical specifications*

- Made of steel
- Slots at 90° on the plate
- Hot galvanised



Code	L [mm]	Fixing rail
<b>8692450</b>	450	41 x (2x41) x2,5
<b>8692600</b>	600	41 x (2x41) x2,5
<b>8692750</b>	750	41 x (2x41) x2,5
<b>8692999</b>	1000	41 x (2x41) x2,5

