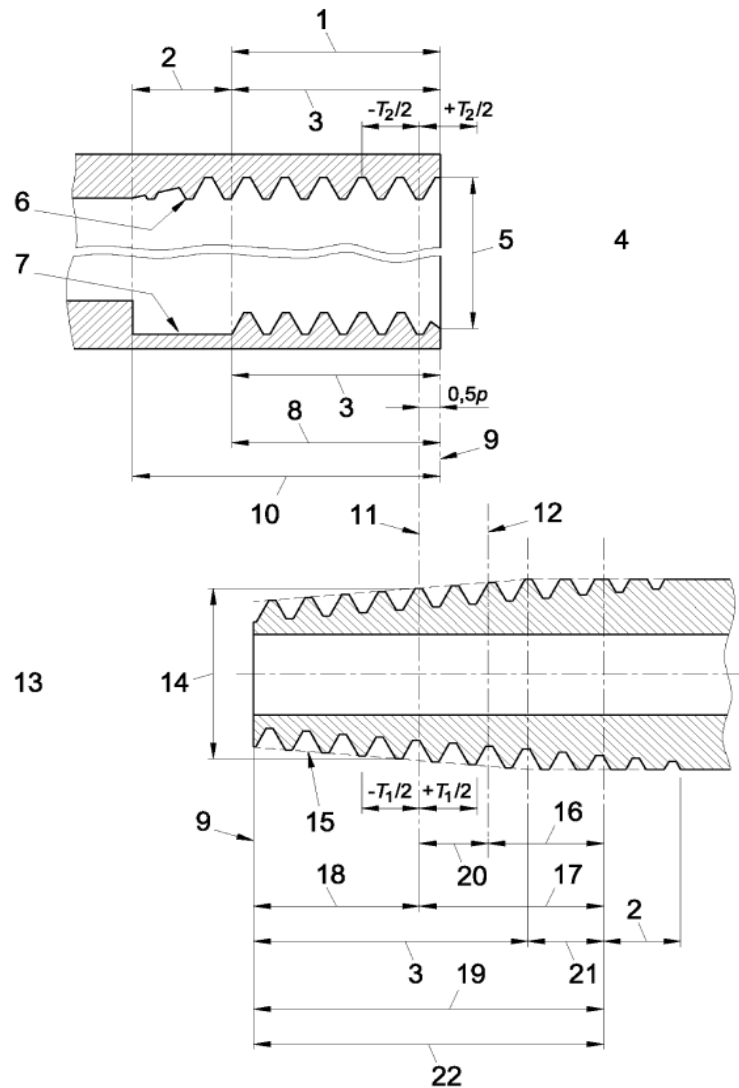


Tolleranze filettature barilotti secondo UNI EN 10226-1:2004 (E)



Key

- 1 accommodation length (L_a) useful thread length (L_i)
- 2 washout thread
- 3 complete thread
- 4 parallel internal threads (R_p)
- 5 gauge diameter (D)
- 6 without free runout
- 7 with free runout
- 8 useful thread length
- 9 reference plane
- 10 accommodation length
- 11 gauge plane
- 12 face of internally threaded part at upper limit of tolerance, at hand tight condition
- 13 taper external threads
- 14 gauge diameter (D)
- 15 major cone
- 16 wrenching length
- 17 assembly length
- 18 gauge length
- 19 useful thread
- 20 length equivalent to positive tolerance on internal thread plus $0,5P$
- 21 incomplete thread
- 22 useful thread length (not less than gauge length plus assembly length)