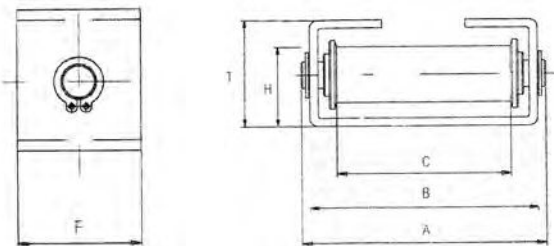


Art. 997 Rollers for saddle



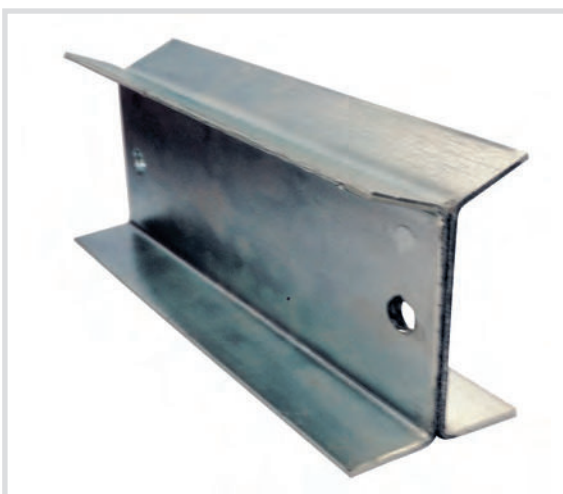
*Technical specifications and advantages*

- Cage made of Fe 360
- Roller made of steel
- Aisi 304 stainless steel pin
- Synthesised bronze bushings
- Galvanised white
- To allow the support and longitudinal sliding of insulated and non-insulated pipes
- The support must be installed together with a support saddle



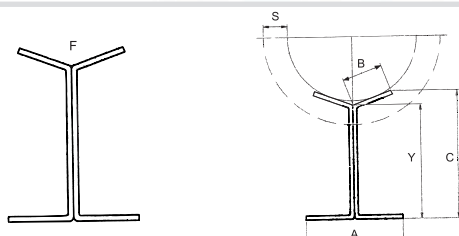
Code	For pipes of diameter	Payload [N]	A [mm]	B [mm]	C [mm]	E [mm]	F [mm]	H [mm]
<b>997080</b>	up to 80 mm	6000	89	82	62	40	35	30
<b>997180</b>	80-180 mm	10000	105	95	65	77	50	61
<b>997300</b>	180-300 mm	15000	143	135	99	100	65	76

Art. 9975 Saddle for rollers 997



*Technical specifications and advantages*

- Saddle made of steel
- Galvanised white
- Support element for insulated and non-insulated pipes. Must be combined with a roller support (art. 997)
- Normally it must be welded to the pipeline



Code	For pipes of diameter	A [mm]	B [mm]	C [mm]	L length [mm]	S insulation [mm]	Y [mm]	Payload [N]
<b>9975080</b>	up to 80 mm	60	25	80	200	40	69	6000
<b>9975180</b>	80-180 mm	60	35	95	300	60	81	10000
<b>9975300</b>	180-300 mm	92	60	125	300	80	101	15000

