

Art. 901R Rondella piana e a C - AISI 316

Stainless steel galvanized washers - AISI 316

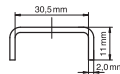
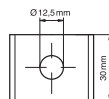
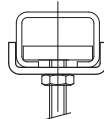
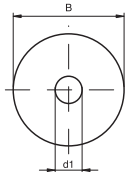
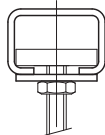


Caratteristiche tecniche e vantaggi

- Realizzata in Inox AISI 316

Codice	B [mm]	d1 Ø [mm]	s [mm]
901R06	25	6,5	2,5
901R08	25	8,5	2,5
901R10	25	10,5	2,5
901R12	30	13,0	3,0
901R16	30	16,5	3,0
Rondella a C			
901R125 per CH1, 15,2	12,5		3,0

Piana



901R125

Art. 658R CorRail angolari - AISI 316

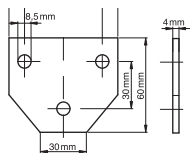
CorRail rail-connectors - AISI 316



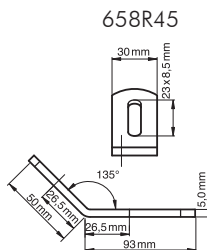
Caratteristiche tecniche e vantaggi

- In acciaio Inox AISI 316

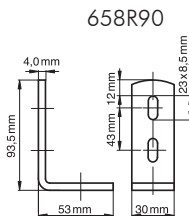
Codice	Profili	
658R90	CorRail	90°
658R45	CorRail	135°
658R101	CorRail	connessione a T



658R101



658R45



658R90