

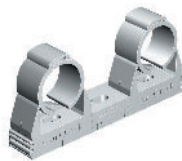
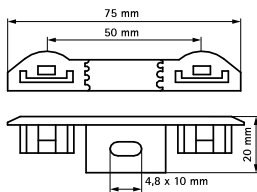
Art. 500 StarQuick® DUO

WATCH THE VIDEO



Technical specifications and advantages

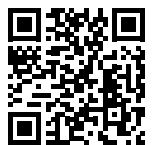
- To attach two pipes with a single fastening
- Perfect for domestic pipes (hot/cold)
- In modified PA 6
- Distance of the axes of the pipes: 50 mm
- RAL 7035 grey colour
- Suitable for StarQuick up to 24 mm (SQ10 to SQ20)
- Resistant to UV rays, ageing, oils and petroleum
- Max temperatures: from -40°C up to 90°C. For short periods, up to 130°C.



Code	Type	Breaking load N at 20° C
500 0050	SQ/2	600

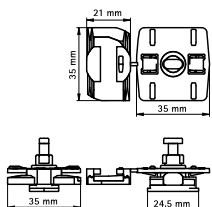
Art. 085 StarQuick® Universal adapter

WATCH THE VIDEO



Technical specifications and advantages

- For attachment of the StarQuick® clamps to our CorRail or STRUT fixing rails
- To add pipes quickly and simply to an existing installation
- Suitable for StarQuick® SQ-10 up to SQ-51
- Material: PA6 modified, grey (according to UNI 7035)
- Resistant to UV rays, ageing, oils and petroleum derivatives
- Not subject to corrosion, recyclable
- Temperatures: from -40°C to 90°C; for limited periods of time, suitable up to 130°C.



Code	For fixing rails
0854332	All CorRail STRUT fixing rails