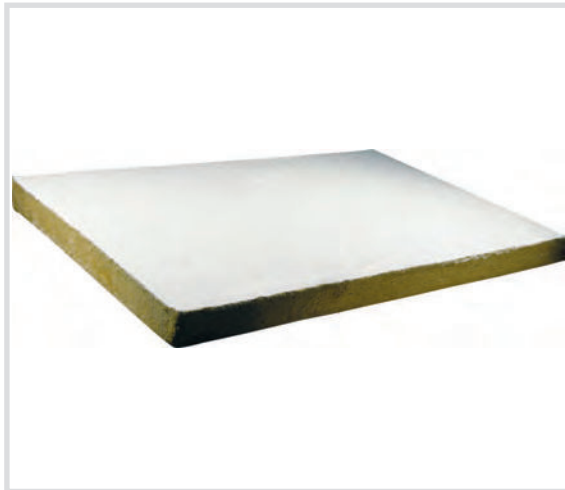


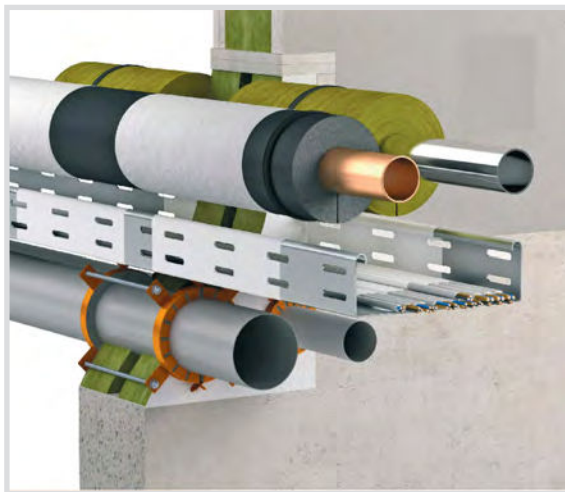
Art. 218220 CORH BS - Fire protection board

WATCH THE VIDEO

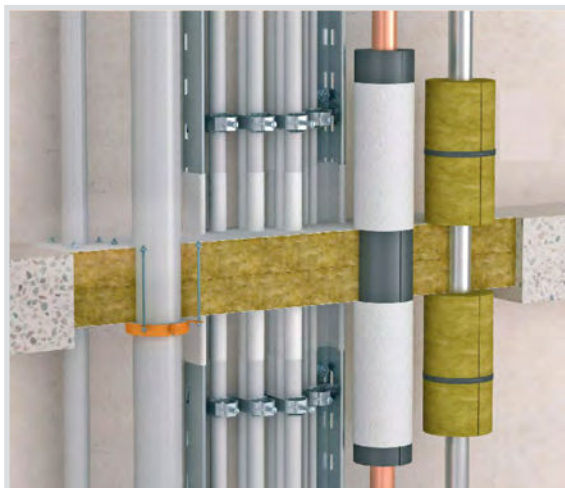


Technical specifications and advantages

- Fire resistant panel for walls and ceilings
- Suitable for multiple crossings of cables, combustible and non-combustible pipes, conduits, etc.
- Impermeable to water vapour and resistant to UV rays with melting point >1000°C
- Base of mineral fibre with single side coating
- High flexibility, cables and pipes can pass through the same opening
- Thermal conductivity $\lambda=0.040$ W/mk
- Fire resistance up to EI 120
- To hermetically seal the small remaining holes, use CORH BMS or CORH BMK paste, or CORH BMA paint
- ETA certificate, CE marked



Code	Dimension [mm]
218220	1000x625x60
218221	1000x600x50 mm



SPECIFICATION ITEM

CORH BS - Supply and installation of CORH BS semi-rigid rock wool panel, treated on one side with CORH BMA ablative product, 1000x625x60 mm in size, designed for fire protection up to EI 120 for wall and/or floor penetrations. The panel can be cut and shaped, with sealing of any gaps using CORH BMS, CORH BMK and/or CORH BMA paste. ETA certified and with CE marking.