

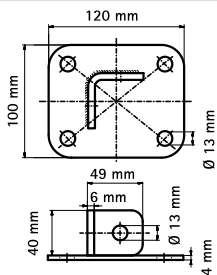
Art. 8634 Wall plate for CorSTRUT structures



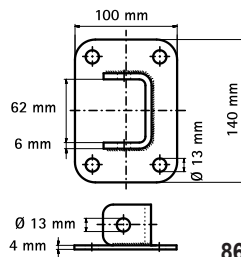
Technical specifications and advantages

- Made with 1.0332 steel
- CO₂ welding
- Slots on the base at 90° to simplify assembly
- Hot-dip galvanised

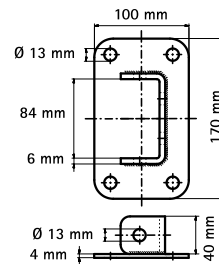
Code	Fixing rail
8634041	41x41
8634062	41x62
8634082	41x82



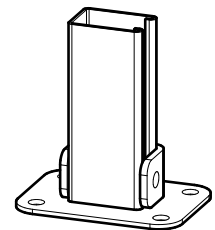
8634041



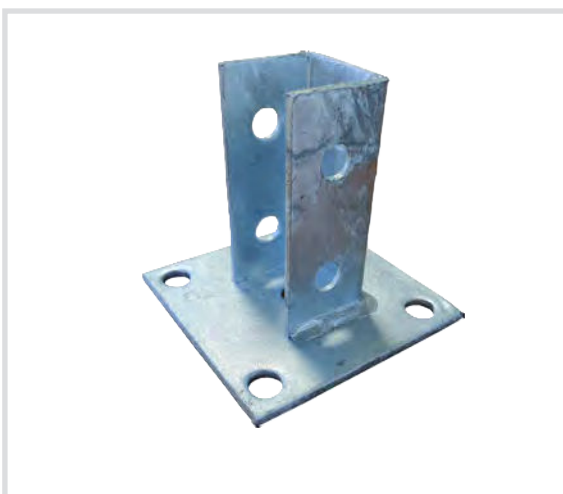
8634062



8634082



Art. 8634141 CorSTRUT wall plate with square base



Technical specifications and advantages

- Made with 1.0332 steel
- Hot-dip galvanised
- Base with 4 holes
- The lateral holes allow assembly of the CorSTRUT fixing rail in any orientation
- CO₂ welding

Code	Fixing rail
8634141	41x41