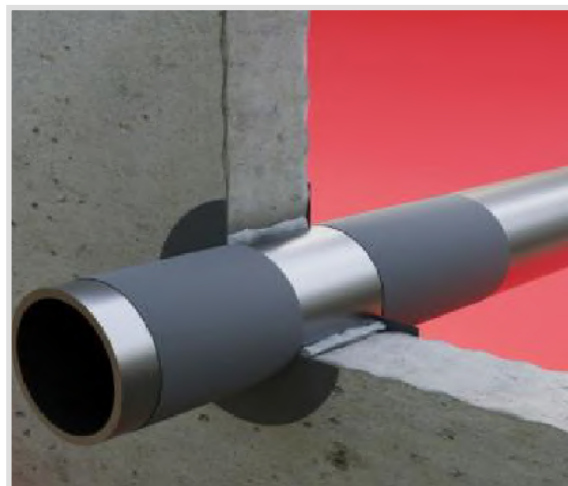


Art. 214 CORH VTM - Vernice intumescente e Pasta
CORH VTM - Intumescent paint and inerzial paste



Diametro tubo	N. tubi rivestiti con CORH VTM 310 ml	N. tubi rivestiti con CORH VTM 3 kg	N. tubi rivestiti con CORH VTM 10 kg
10	62	375	1248
15	48	290	966
20	37	225	748
25	29	176	587
30	23	140	468
35	19	114	379
40	16	93	312
45	13	78	260
50	11	66	220
55	9	56	188
60	8	49	163
65	7	43	142
70	6	37	125
75	6	33	110
80	5	30	98
85	4	26	88
90	4	24	80
95	4	22	72
100	3	20	66
105	3	18	60
110	3	16	55
115	3	15	51
120	2	14	47
125	2	13	43
130	2	12	40
135	2	11	37
140	2	10	35
145	2	10	33
150	2	9	31
155	1	9	29
160	1	8	27
165	1	8	26
170	1	7	24
175	1	7	23
180	1	6	22
185	1	6	20
190	0	6	19
195	0	6	19
200	0	5	18
205	0	5	17
210	0	5	16
215	0	5	15
220	0	4	15
225	0	4	14
230	0	4	13
235	0	4	13
240	0	4	12
245	0	4	12
250	0	3	11
255	0	3	11
260	0	3	11
265	0	3	10
270	0	2	9
275	0	2	9