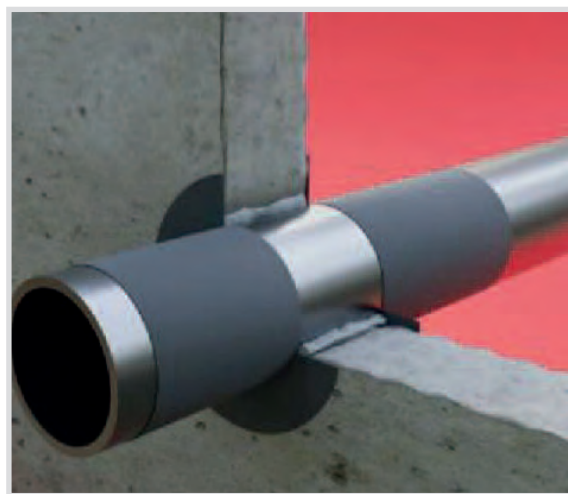


Art. 214 CORH VTM - Intumescent paint



Technical specifications and advantages

- For non-insulated metal pipes
- Also suitable for combustible pipes up to 40 mm in diameter
- Based on synthetic resin with water dispersion
- Storage temperature: +5°C/30°C
- Provides a durable intumescent fire protection coating
- Easy application with brush or spatula
- No need to add water to the mixture
- Available in bucket or cartridge
- Fire resistant up to EI 120
- ETA certificate, CE marked



WATCH THE VIDEO



Code	Type	Quantity
214001	Cartridge	310 ml
214003	Bucket	3 kg
214010	Bucket	10 kg

Fire resistance	Up to EI 120
Fire reaction	Bfl-s1, B-s2, d0
Colour	Grey
Specific weight	1,42 ± 5% g/cm ³
Use category	Z1, Z2
Non-volatile substances content (%)	73,9 ± 5%
Storage temperature	From +5°C Up to +30°C
To be consumed within	10 months
Consumption (kg/m ³) to obtain a dry film of 1 mm thickness	1,89 kg/m ²

SPECIFICATION ITEM for non-insulated metal pipes

CORH VTM - Supply and application of CORH VTM synthetic resin-based intumescent paint with fire resistance characteristics up to EI 120, to be applied on both sides of the penetrations of non-insulated metal pipes (steel, cast iron, copper) or pipes combustibles up to 40 mm diameter. ETA certified and with CE marking.