

Fissaggi 01



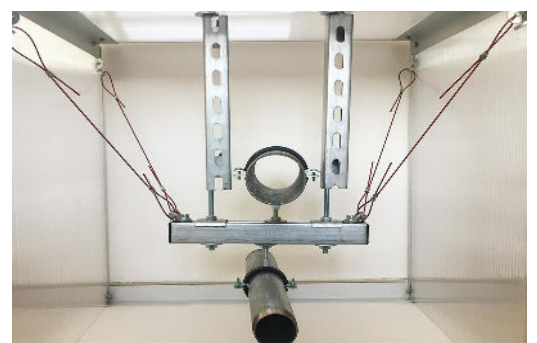
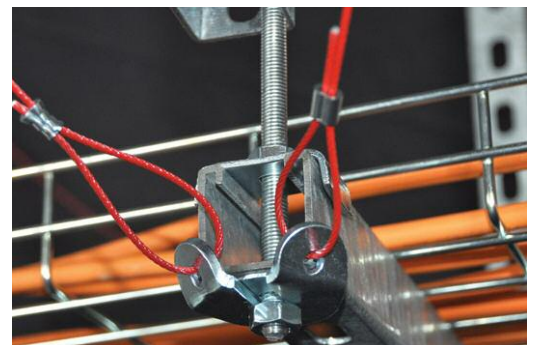
Seismic components



401001 J 1	40110 J 1	401200 J 2	401214 J 2
8650002 J 3	8650001 J 4	4013 J 5	4017 J 6
4018 J 6	401900 J 7	4021 J 7	401912 J 8
402000 J 8	4020 J 9	403000 J 9	8650011 J 10
8650010 J 10	8650012 J 11	8659090 J 11	

Seismic components

- J 1 Bar Joist Attachment
- J 1 Adjustable I-Beam attachment
- J 2 I-Beam Attachment
- J 2 Universal attachment for structural elements
- J 3 Seismic Bracing for threaded bars
- J 4 Seismic component for fixing rails
- J 5 Universal sway brace
- J 6 Crimping sleeve
- J 6 Cable spool
- J 7 Anti-lever effect clip
- J 7 Universal reinforcing clip
- J 8 Manual crimper
- J 8 Manual multi-cable crimper
- J 9 Universal reinforcing clip for threaded rods
- J 9 CorSTRUT rod stiffener
- J 10 Seismic increased bracing hinge
- J 10 Seismic hinge
- J 11 Bracing for seismic hinge
- J 11 Seismic angle bracket with bracing



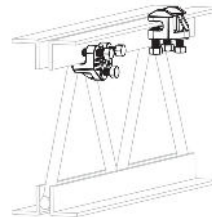
Art. 401001 Bar Joist Attachment



Technical specifications and advantages

- Easy installation and inspection of the seismic reinforcement
- Pre-assembled
- Meets the NFPA-13 requirements for seismic bracing
- Material: cast iron, electrogalvanised
- Screw diameter: 1/2"
- For beams or girders

Code	Reinforcement Ø direction	Beam thickness [mm]	Max. pipes diam. [mm]	Payload [N]
401001	Parallel	6,4 - 12,7	25 - 250	13340
	Perpendicular	6,4 - 12,7	25 - 300	16630



Art. 40110x Adjustable I-Beam attachment



Technical specifications and advantages

- Pre-assembled, ready to install
- Meets the NFPA-13 requirements for seismic bracing
- Material: cast iron, electrogalvanised
- For beams or girders

Code	Beam thickness [mm]	Beam width [mm]	Max. pipes diam. [mm]	Payload [N]
401101	6,4 - 19,1	100 - 216	25 - 300	16630
401102	6,4 - 19,1	216 - 368	25 - 300	16630



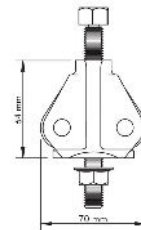
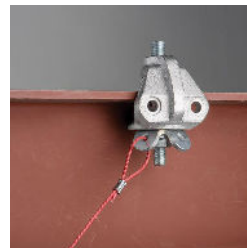
Art. 401200-Beam Attachment



Caratteristiche tecniche e vantaggi

- Meets the NFPA-13 requirements for seismic bracing
- Material: cast iron, electrogalvanised
- For beams or girders
- Screw diameter: 1/2"

Code	Beam thickness [mm]	Payload [N]
401200	6,4 - 19,1	5340



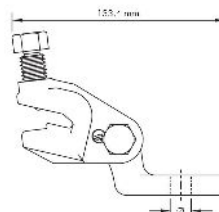
Art. 401214 Universal attachment for structural elements



Technical specifications and advantages

- Can be attached directly to concrete, wood, beam hooks
- Can be used for lateral and longitudinal bracings
- Meets the NFPA-13 requirements for seismic bracing
- Material: cast iron, electrogalvanised

Code	Hole Ø diameter [mm]	Max. pipes diam. [mm]	Payload [N]
401214	14	25 - 200	8960

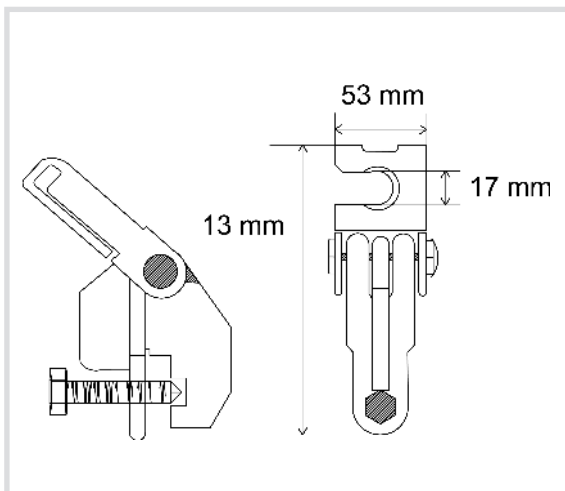


Art. 8650002 Seismic Bracing for threaded bars



Technical specifications

- Made with 1.0332 steel
- Galvanised
- For all STRUT fixing rails
- For threaded rods up to M16
- To build seismic braces with any inclination



Code

8650002



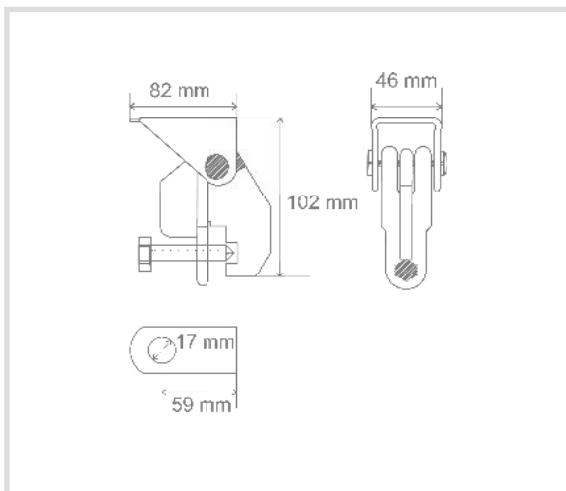
Art. 8650001 Seismic component for fixing rails



Technical specifications

- Made with 1.0332 steel
- Galvanised
- For all STRUT fixing rails
- To build seismic braces with any inclination

WATCH THE VIDEO



Code

8650001



Art. 4013xxx Universal sway brace

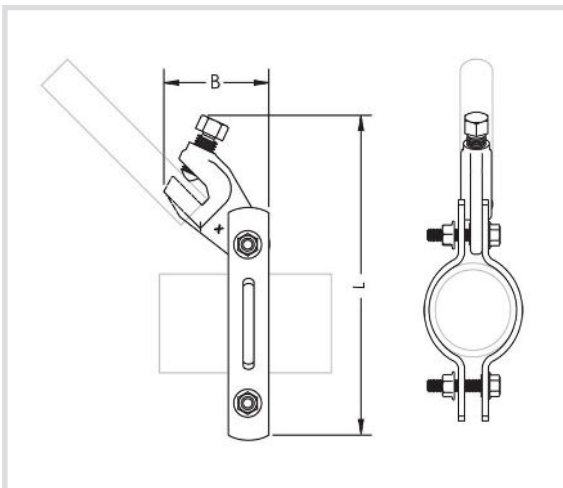


Technical specifications and advantages

- Can be used for lateral and longitudinal bracing
- Meets the NFPA-13 requirements for seismic bracing
- Material: steel and cast iron, electrogalvanised
- Easy installation



Code	D Pipes ["]	DN	Length [mm]	Payload [N]
4013034	1	25	175	2910
4013042	1 1/4	32	187	2910
4013048	1 1/2	40	197	2910
4013060	2	50	206	2910
4013076	2 1/2	65	225	2910
4013090	3	80	238	2910
4013110	4	100	270	2910
4013140	5	125	308	2910
4013168	6	150	346	2910
4013219	8	200	400	2910
4013273	10	250	457	2910



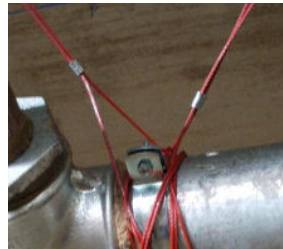
Art. 4017xx Crimping sleeve



Technical specifications and advantages

- To seal cables
- Material: copper, electrogalvanised

Code	Cable Ø diameter [mm]
401712	2,4
401718	3,2
401736	4,8



Art. 4018xx Cable spool



Technical specifications and advantages

- Only the necessary length is used
- Pre-tensioned cable
- Material: pre-galvanised steel, painted

Code	Cable Ø diameter [mm]	Coil length [m]	Colour	Payload [N]
401812	2,4	76,2	Red	2668
401818	3,2	76,2	White	4893
401836	4,8	76,2	Blue	12455



Art. 401900 Anti-lever effect clip



Technical specifications and advantages

- Eliminates the leverage effect on the cable anchorage
- Suitable for cables diam. 2.4 - 3.2 - 4.8 mm
- Material: steel, electrogalvanised

Code	Hole Ø diameter [mm]	Payload [N]
401900	14	12460



Art. 4021xx Universal reinforcing clip



Technical specifications and advantages

- To connect the bracings wire to the structure
- For cables diam. 2.4 - 3.2 - 4.8
- Material: steel, electrogalvanised

Code	Hole Ø diameter [mm]	Thickness [mm]	Payload [N]
402111	11	4,27	7117
402114	14	4,27	7117
402117	17	4,27	7117



Art. 401912 Manual crimper

*Technical specifications and advantages*

- Material: steel

Code	Cable Ø diameter [mm]
401912	2,4

Art. 402000 Manual multi-cable crimper

*Technical specifications*

- Material: steel

Code	Cable Ø diameter [mm]
402000	2,4 - 3,2 - 4,8

Art. 4020xx Universal reinforcing clip for threaded rods



Technical specifications and advantages

- To connect reinforcing cables using the existing threaded rods on the structure
- Material: steel, electrogalvanised

Code	For threaded rods	Cable diameter [mm]	Thickness [mm]
402010	M10	2,4 - 3,2	4,27
402012	M12	2,4 - 3,2	4,27
402016	M16	2,4 - 3,2	4,27



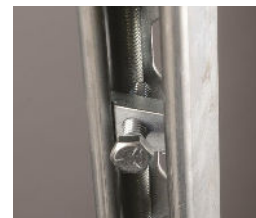
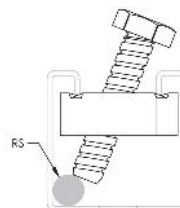
Art. 403000CorSTRUT rod stiffener



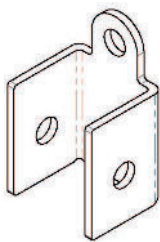
Technical specifications and advantages

- To stiffen the threaded rod by fixing it to a STRUT fixing rail
- Material: steel, electrogalvanised

Code	For RS threaded rods
403000	M10-M12-M16-M20



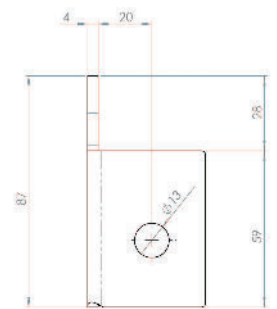
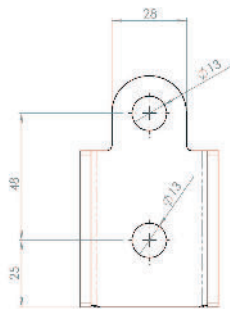
Art. 8650011 Seismic increased bracing hinge



Technical specifications and advantages

- Bracings for seismic hinge connection for fixing rail 41
- Made of S235JR steel
- Galvanised

Code	Thickness [mm]
8650011	4



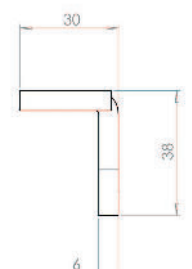
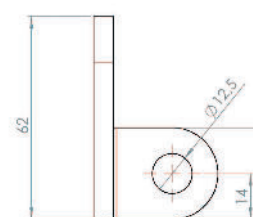
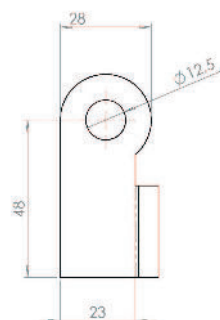
Art. 8650010 Seismic hinge



Technical specifications and advantages

- Hinge for seismic bracing
- Made of S235JR steel
- Electrolytic zinc plating

Code	Thickness [mm]
8650010	6



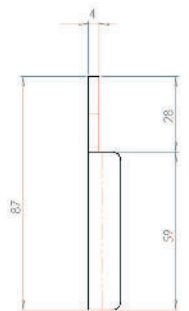
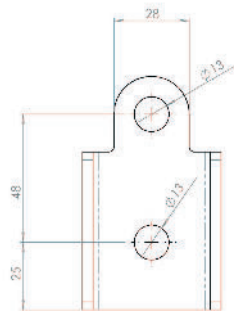
Art. 8650012 Bracing for seismic hinge



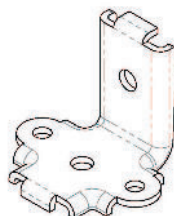
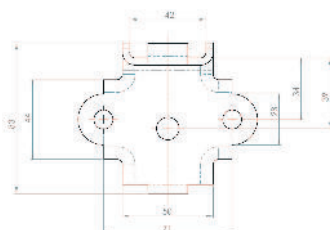
Caratteristiche tecniche e vantaggi

- Bracings for seismic hinge connection
- Suitable for all types of CorSTRUT fixing rail
- Made of S235JR steel
- Galvanised

Code	Threaded [mm]
8650012	4



Art. 8659090 Seismic angle bracket with bracing



Caratteristiche tecniche e vantaggi

- Angle bracket with reinforcements for seismic applications
- Made of S235JR steel
- Zincato

Code	Threaded [mm]
8659090	4

