

### Art. 401001 Bar Joist Attachment



#### Technical specifications and advantages

- Easy installation and inspection of the seismic reinforcement
- Pre-assembled
- Meets the NFPA-13 requirements for seismic bracing
- Material: cast iron, electrogalvanised
- Screw diameter: 1/2"
- For beams or girders

Code	Reinforcement Ø direction	Beam thickness [mm]	Max. pipes diam. [mm]	Payload [N]
401001	Parallel	6,4 - 12,7	25 - 250	13340
	Perpendicular	6,4 - 12,7	25 - 300	16630



### Art. 40110x Adjustable I-Beam attachment



#### Technical specifications and advantages

- Pre-assembled, ready to install
- Meets the NFPA-13 requirements for seismic bracing
- Material: cast iron, electrogalvanised
- For beams or girders

Code	Beam thickness [mm]	Beam width [mm]	Max. pipes diam. [mm]	Payload [N]
401101	6,4 - 19,1	100 - 216	25 - 300	16630
401102	6,4 - 19,1	216 - 368	25 - 300	16630



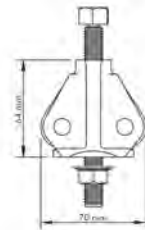
### Art. 401200-Beam Attachment



#### Caratteristiche tecniche e vantaggi

- Meets the NFPA-13 requirements for seismic bracing
- Material: cast iron, electrogalvanised
- For beams or girders
- Screw diameter: 1/2"

Code	Beam thickness [mm]	Payload [N]
<b>401200</b>	6,4 - 19,1	5340



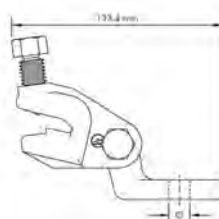
### Art. 401214 Universal attachment for structural elements



#### Technical specifications and advantages

- Can be attached directly to concrete, wood, beam hooks
- Can be used for lateral and longitudinal bracings
- Meets the NFPA-13 requirements for seismic bracing
- Material: cast iron, electrogalvanised

Code	Hole Ø diameter [mm]	Max. pipes diam. [mm]	Payload [N]
<b>401214</b>	14	25 - 200	8960

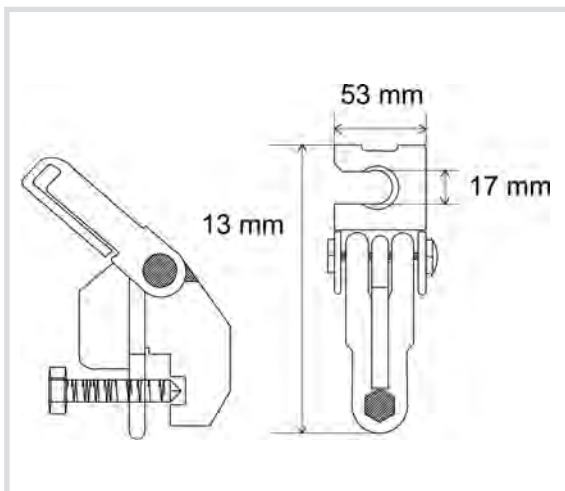


Art. 8650002 Seismic Bracing for threaded bars



#### *Technical specifications*

- Made with 1.0332 steel
- Galvanised
- For all STRUT fixing rails
- For threaded rods up to M16
- To build seismic braces with any inclination



Code

**8650002**



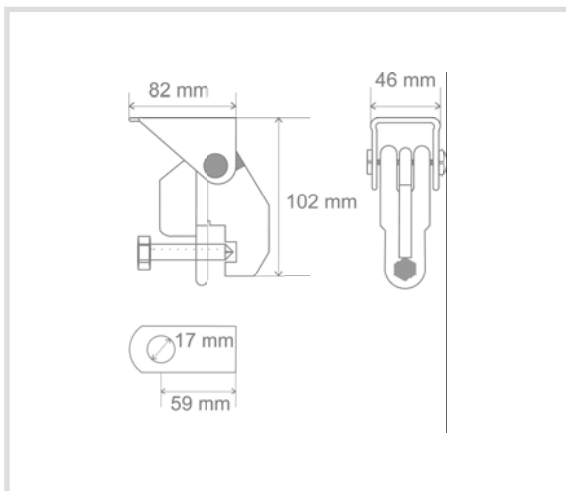
Art. 8650001 Seismic component for fixing rails



*Technical specifications*

- Made with 1.0332 steel
- Galvanised
- For all STRUT fixing rails
- To build seismic braces with any inclination

WATCH THE VIDEO



Code

**8650001**



### Art. 4013xxx Universal sway brace

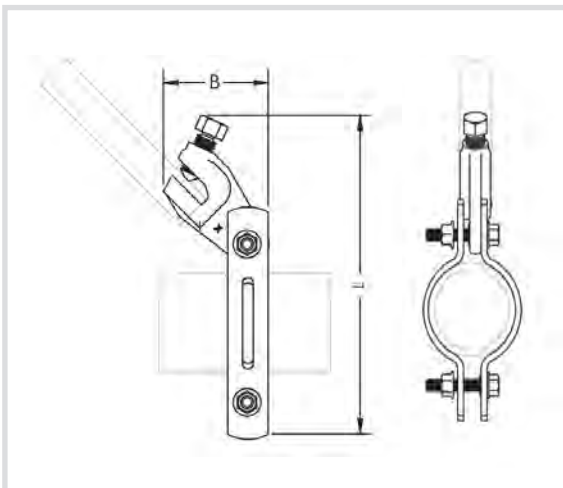


#### Technical specifications and advantages

- Can be used for lateral and longitudinal bracing
- Meets the NFPA-13 requirements for seismic bracing
- Material: steel and cast iron, electrogalvanised
- Easy installation



Code	D Pipes [ " ]	DN	Length [mm]	Payload [N]
4013034	1	25	175	2910
4013042	1 1/4	32	187	2910
4013048	1 1/2	40	197	2910
4013060	2	50	206	2910
4013076	2 1/2	65	225	2910
4013090	3	80	238	2910
4013110	4	100	270	2910
4013140	5	125	308	2910
4013168	6	150	346	2910
4013219	8	200	400	2910
4013273	10	250	457	2910



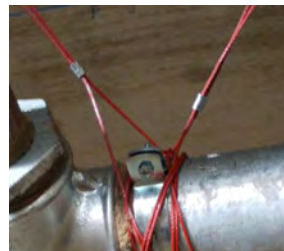
### Art. 4017xx Crimping sleeve



#### Technical specifications and advantages

- To seal cables
- Material: copper, electrogalvanised

Code	Cable Ø diameter [mm]
<b>401712</b>	2,4
<b>401718</b>	3,2
<b>401736</b>	4,8



### Art. 4018xx Cable spool



#### Technical specifications and advantages

- Only the necessary length is used
- Pre-tensioned cable
- Material: pre-galvanised steel, painted

Code	Cable Ø diameter [mm]	Coil length [m]	Colour	Payload [N]
<b>401812</b>	2,4	76,2	Red	2668
<b>401818</b>	3,2	76,2	White	4893
<b>401836</b>	4,8	76,2	Blue	12455



Art. 401900 Anti-lever effect clip



#### Technical specifications and advantages

- Eliminates the leverage effect on the cable anchorage
- Suitable for cables diam. 2.4 - 3.2 - 4.8 mm
- Material: steel, electrogalvanised

Code	Hole Ø diameter [mm]	Payload [N]
<b>401900</b>	14	12460



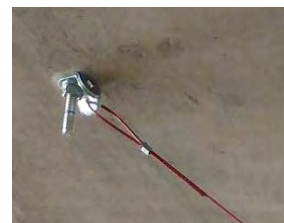
Art. 4021xx Universal reinforcing clip



#### Technical specifications and advantages

- To connect the bracings wire to the structure
- For cables diam. 2.4 - 3.2 - 4.8
- Material: steel, electrogalvanised

Code	Hole Ø diameter [mm]	Thickness [mm]	Payload [N]
<b>402111</b>	11	4,27	7117
<b>402114</b>	14	4,27	7117
<b>402117</b>	17	4,27	7117



## Art. 401912 Manual crimper

*Technical specifications and advantages*

- Material: steel

Code	Cable Ø diameter [mm]
<b>401912</b>	2,4

## Art. 402000 Manual multi-cable crimper

*Technical specifications*

- Material: steel

Code	Cable Ø diameter [mm]
<b>402000</b>	2,4 - 3,2 - 4,8



### Art. 4020xx Universal reinforcing clip for threaded rods



#### Technical specifications and advantages

- To connect reinforcing cables using the existing threaded rods on the structure
- Material: steel, electrogalvanised

Code	For threaded rods	Cable diameter [mm]	Thickness [mm]
<b>402010</b>	M10	2,4 - 3,2	4,27
<b>402012</b>	M12	2,4 - 3,2	4,27
<b>402016</b>	M16	2,4 - 3,2	4,27



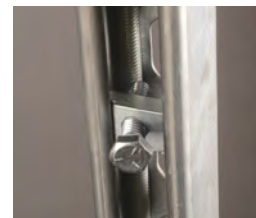
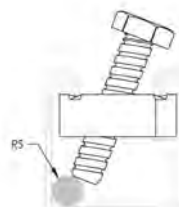
### Art. 403000CorSTRUT rod stiffener



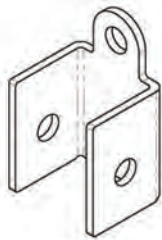
#### Technical specifications and advantages

- To stiffen the threaded rod by fixing it to a STRUT fixing rail
- Material: steel, electrogalvanised

Code	For RS threaded rods
<b>403000</b>	M10-M12-M16-M20



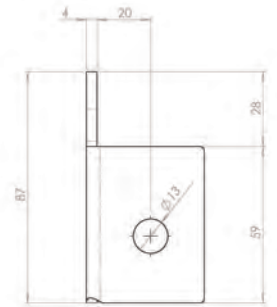
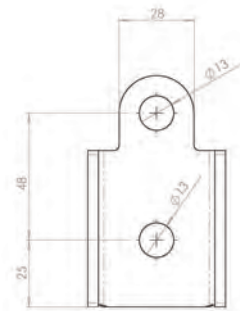
### Art. 8650011 Seismic increased bracing hinge



#### Technical specifications and advantages

- Bracings for seismic hinge connection for fixing rail 41
- Made of S235JR steel
- Galvanised

Code	Thickness [mm]
<b>8650011</b>	4



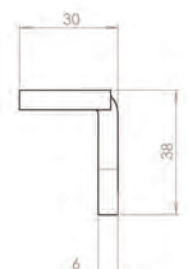
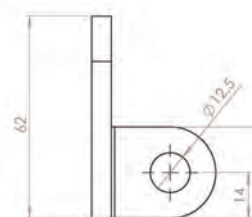
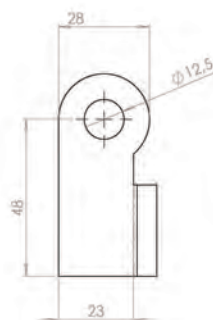
### Art. 8650010 Seismic hinge



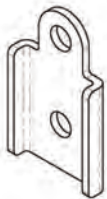
#### Technical specifications and advantages

- Hinge for seismic bracing
- Made of S235JR steel
- Electrolytic zinc plating

Code	Thickness [mm]
<b>8650010</b>	6



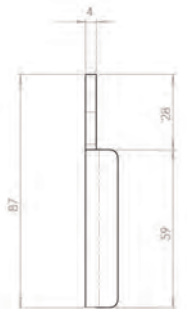
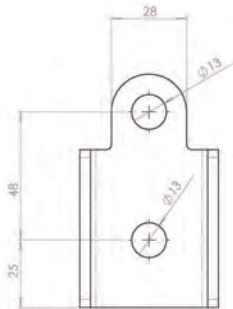
Art. 8650012 Bracing for seismic hinge



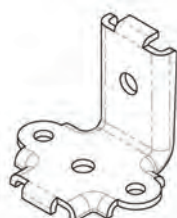
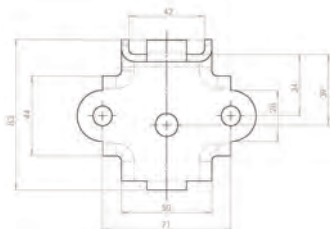
### Caratteristiche tecniche e vantaggi

- Bracings for seismic hinge connection
- Suitable for all types of CorSTRUT fixing rail
- Made of S235JR steel
- Galvanised

Code	Threaded [mm]
<b>8650012</b>	4



Art. 8659090 Seismic angle bracket with bracing



### Caratteristiche tecniche e vantaggi

- Angle bracket with reinforcements for seismic applications
- Made of S235JR steel
- Zincato

Code	Threaded [mm]
<b>8659090</b>	4

